



DISCOVER EXPERIENCE EXPLORE

SUMMER **IN THE** EASTERN CAPE

IN THIS ISSUE:

PAGE 08
SUMMER CALENDAR

PAGE 09
SUMMER BUCKET LIST

PAGE 10
TAKE A MICRO-TRIP THIS SUMMER

PAGE 12
INSTA INSPIRATIONS

PAGE 20
SAFE AND SOUND SUMMER

PAGE 21
EPIC EASTERN CAPE BLUE FLAG BEACHES

PAGE 22
SUMMER GREEN AND CLEAN



DOWNLOAD THE EXPLORE
EASTERN CAPE APP

VISITEASTERNCAPE.CO.ZA

[f/Eastern Cape Tourism](https://www.facebook.com/EasternCapeTourism)

[/EC_Tourism](https://www.instagram.com/EC_Tourism)

[/easterncapetourism](https://www.instagram.com/easterncapetourism)

ADVENTURE PROVINCE
Eastern Cape
PARKS & TOURISM AGENCY



THIS SUMMER... DISCOVER, EXPERIENCE AND EXPLORE THE EASTERN CAPE

Summer's here and what better way to do it than to discover, experience and explore the Eastern Cape. Being the second largest province of South Africa, there is so much on offer to satisfy all kinds of travellers - from the adventurous to the relaxed. Within its reach is the stunning Sunshine Coast, aptly named for receiving the highest amount of sunshine hours in South Africa.

In this issue, you'll be provided with all the information you need to enjoy summer in the Eastern Cape to its maximum.

Discover the Eastern Cape Blue Flag Beaches. Having met the strict criteria to be given this eco-label, these beaches are the ideal spot to spend summer days with family and friends.

Experience summer at its best on the Sunshine Coast and if you're needing more than just sunshine as a reason, you'll be provided with 100 reasons to explore the Eastern Cape. You'll also be given some helpful hints and tips for how to enjoy your adventure safely and responsibly.

Explore all the Eastern Cape has to offer by trying out one of many microtrips we have developed to get you on the road, into nature and experiencing adventure.

The team at Eastern Cape Parks and Tourism Agency wishes you a joyous festive season - discovering, experiencing and exploring the Eastern Cape with friends and family!



The Sunshine Coast is the stunning coastline strip, which can be found between Port Elizabeth and East London. Traverse the R72 and explore coastal towns and rural settlements such as Colchester, Alexandria, Kenton-on-Sea, Port Alfred, Hamburg, Kiwane, Kidd's Beach and more. Each having its own charm and unique atmosphere, these hamlets make for lovely road trip stopovers along the way when travelling between the two cities.

It is no wonder that this route is a major tourist attraction with resorts offering a range of exciting activities. The pure, natural beauty of sandy coastline and many rivers can be seen along the way. With fantastic game reserves such as Addo Elephant National Park, Kariega, Oceana and Sibuya, visitors will be spoilt for choice selecting Big 5 and 7 beach and bush experiences.

Visitors can also experience the fascinating history of the area by visiting several museums. With little towns such as King William's Town and Grahamstown, it is impossible for travellers not to be drawn in by the heritage and monuments found here.

Known as a friendly province, the people of the Eastern Cape are incredible hosts. Experience Eastern Cape hospitality in the numerous accommodation and restaurant options.

All in all, the Sunshine Coast is the route to take this summer season.



*Your travel partner
in your pocket*

GET THE
**EXPLORE
EASTERN
CAPE**
mobile travel app NOW!



Loaded with features

Download the App

Search for "Explore Eastern Cape"





NAHOON BOARDWALK - BUFFALO CITY

DISCOVER Buffalo City

A prized gem of the area, Buffalo City can be found in the Amathole District. East London, King William's Town, Mdantsane and Bhisho are some of the communities which make up the district.

Buffalo City was established following the local government elections in 2000. Buffalo City could be suggested as the middle point between the beautiful Sunshine Coast tourist route, which stretches about 300km west to Port Elizabeth, and north-east on the Wild Coast route towards Durban. There are a number of delightful towns and villages along the Sunshine Coast which snooze along the river mouths and glittering beaches.

The Wild Coast, consisting of Great Kei and Mquma and Mbashe municipalities, prides itself in being untamed and untouched with its dense forests of indigenous trees and plants, complete with a rugged coastline and breathtaking views.

Along with its exceptional coastline made up of sparkling beaches and warm oceans, the area has a temperate climate, a rich cultural history, heritage sites and an abundance of natural resources. What more could tourists ask for? It is a completely packaged destination and offers opportunities for year-round holidays; be it for holidaying or business; local or international visitors. Everyone can find his or her niche when welcomed here.

Just 56km from East London, King William's Town is a fusion of cultures rooted deep in history, which is reflected in the people and the architecture of this quaint town. Bhisho, the host of the Provincial Legislature, is 3km east of King William's Town and stands as the provincial capital of the Eastern Cape.

Mdantsane is a vibrant township on the outskirts of East London where the cultural diversity of the Eastern Cape can be fully experienced.

Having a better understanding of the area, discover what makes Buffalo City's heart pump. There are many summer season events on offer, which will help those find out just that.

The City hosts 'The Buffalo City Summer Season programme', incorporating the switching on of the festive lights as well as the summer carnival events. These events aim to improve the city's position as a tourist destination and act as a marketing drive to make Buffalo City a tourist destination. Additionally, the events contribute to local economic development as well as enhance the calendar of attractions over this period.



AREENA RIVERSIDE RESORT



BUFFALO RIVER

BUFFALO CITY TOURS

Here are some great recommendations for touring the city:

FOUR DAY TOUR

DAY ONE kicks off with the tour of the city, East London, and Mdantsane. Lunch will be at one of the local restaurants in Mdantsane, Mthombo's place or Man's Braai. Tourists will gain a first hand experience of the lifestyle and taste of Mdantsane. Following lunch there will be a visit to the Steve Biko Centre to learn more about this apartheid hero. There will then be a transfer to one of the game farms - Inkwenkwezi or Mpongo Park, for a late afternoon game drive. The day will end with an overnight stay in the relaxing lodges.

DAY TWO will start with a scenic morning game drive, before heading to Ngxingxolo Village for a traditional isiXhosa experience. Thereafter visitors will head to the fascinating Amathole Museum in King William's Town.

DAY THREE, enjoy the Mandela Experience to follow this incredible man's journey. On return to East London, accommodation will be offered. After breakfast, guests will depart for Chintsa to enjoy a beach horse ride, learn to surf or take a quad bike ride at Areena. Other attractions include a brewery tour at Emeraldvale Brewery. The overnight stay will be back in East London with dinner at an upmarket restaurant.

DAY FOUR will be dedicated to a cruise on the Nahoon River after breakfast. This will bring the tour to a memorable end.

HERITAGE TOUR - FULL DAY

The tour will start off with a drive to Nahoon beach to walk along the boardwalk and visit the Archaeological Museum.

From Nahoon, there will be a drive with a stop on the Esplanade and a visit to Heroes Park. You will be guided to the German Settlers Memorial and Multicultural Memorial. In front of these memorials is the East London Aquarium.

The next stop will be the City Hall built in 1897 and proudly towering over Oxford Street. In front of the City Hall, one can view the statue of our political struggle icon, Steve Bantu Biko.

Thereafter, travel will commence to Bhisho to visit the Amathole Museum. Lunch will be at Man's Buy and Braai in King William's Town.

From there, guests will proceed to the Steve Biko Centre before driving back to East London.

CITY TOUR - FULL DAY

This is a city tour of East London including the German Settlers Monument at the Esplanade.

Following this, Drifters Raceway will be available for activities like paintballing, go-karting and quad biking.

A stop at Areena Riverside Resort will be made for river canoeing, quad biking and segway rides.

A visit to Emerald Breweries would follow for a beer tasting and a relaxing time. The tour will conclude with returning to East London for dinner and an overnight stay at a local establishment.

ADVENTURE TOUR - FULL DAY

The tour will start with driving to the East Coast road with a stop at a Strawberry Farm.

Next, the Areena Riverside Resort will entertain with a few adventure activities like quadbiking, ziplining, river canoeing and more.

From Areena, guests will be driven to Inkwenkwezi Private Game Reserve for an interaction with elephants and cheetahs, as well as a delicious lunch.

From Inkwenkwezi, there will be a stop at the local brewery for a beer tour and tasting before returning back to East London.

OVER AND ABOVE
THESE EXCELLENT TOUR
OPTIONS, EXTENDED
AND CUSTOMISED TOURS
CAN BE DISCUSSED WITH
TOUR OPERATORS.

Want to discover Buffalo City in your unique way? Choose attractions that appeal to you most from the list below:



ESCAPE TO THE OUTDOORS

Buffalo City offers the perfect escape to new landscapes and scenery. Based between the Sunshine Coast and the Wild Coast, the choice of views is abundant. The sub-tropical climate lends itself to scenic trail walking, hiking and bird watching. Enter a different world when driving just a short distance from the city to see the majestic Big 5 at a number of affordable private game reserves.



TAKE A HIKE

Get active by taking a hike through the stunning surroundings to experience the beauty Buffalo City holds. There is a wide range of easy, moderate and more difficult hikes suitable for hikers of different ability. Famous shipwreck hikes include the Amathole and Standloper, while there are more trails to be found in the Nahoon Estuary Nature Reserve or Kologha Indigenous Forest Nature Reserve.



BE GUIDED ON A CANOE TRIP

Be guided by an expert on the surrounding rivers such as Nahoon, Gonubie, Kei, Keiskamma, Buffalo and Kowie. Experienced team leaders will direct you on these trips which cater for people of all fitness levels and ages. There is a large choice of tours with full or partially catered for options. Discovering the area by water is not only exciting but is also a way of seeing a different perspective of the area.



PACK A PICNIC

Get family and friends outdoors for a picnic or braai on the water's edge at the different picnic sites across the city. This is a fun and affordable option for families, couples or friends to enjoy the sunshine or beautiful sunsets during the summer months.



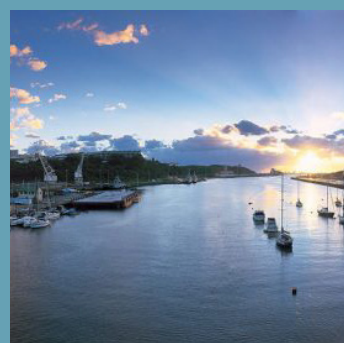
CATCH THE BIG 5

There are many popular game reserves within close proximity of Buffalo City. They present excellent opportunities to see the exquisite animals in their natural environment. This will be a rewarding and fun day out for anyone.



TRY AN EXTREME SPORT

Adrenaline junkies love visiting this province with so many adventurous activities. Paragliding and micro-lighting, helicopter flips, surfing at world premier surfing locations, rock-climbing and abseiling, windsurfing, ocean-kayaking and yachting are just a few of the options available.



ENJOY A SUNSET CRUISE IN SOUTH AFRICA'S ONLY RIVER PORT

The Port of East London is a small but evolving waterfront development, named after one of Buffalo City's most famous residents, Marjorie Courtenay-Latimer.

On the daily harbour and open-sea cruises, passengers may see dolphins swimming at the harbour mouth. There are also river cruises on the Nahoon and Buffalo Rivers.



GET IN TOUCH WITH HISTORY

A number of sites commemorate the liberation struggle and icons. The Steve Biko Centre in King William's Town (Ginsberg) is dedicated to the anti-apartheid activist, Steve Biko, and offers a museum, library, restaurant, conference facilities and garden to honour the human rights activists.



AUTHENTIC XHOSA CULTURE

Encounter a traditional Xhosa way of life where you can join expert guides in a visit to a Xhosa homestead and meet and socialise with a local Xhosa family. There are also township tours on offer.

FOR MORE
INFORMATION
CONTACT:

EL AIRPORT: Tourism Info. Office - Arrivals Terminal | Tel: 043 736 3019
DIMBAZA: Wall of Fame, Main Road | Tel: 040 656 2062
ORIENT BEACH: Orient Beach Complex | Tel: 043 705 3556/043 705 3570
www.bctourism.co.za

KING WILLIAM'S TOWN: 27 Taylor Street | Tel: 043 642 1215
HEMMINGWAYS MALL: Information Office | Tel: 043 721 1007



SHARK ROCK PIER - NELSON MANDELA BAY

DISCOVER

Nelson Mandela Bay

Situated on the edge of the Indian Ocean, Nelson Mandela Bay is naturally a magnificent coastal playground. 16km of stunning beaches wrap the area but it has so much more on offer. With activities for all members of the family, there are multiple restaurants, attractions, shopping centres and more in this area. Nelson Mandela Bay offers the complete package having a rich history and being a popular tourist destination.

The area is named after the late world leader and freedom fighter, Nelson Mandela, to honour the role he played during the struggle. There are establishments and monuments spread throughout the city that further honour this amazing man.

Nelson Mandela Bay formed its municipality in 2001 and includes neighbouring areas such as Uitenhage and Despatch. There are also a number of farms as agriculture is prominent in this area. Port Elizabeth is considered to be the mohair capital of the world with mohair farms and factories surrounding this area.

The climate is very moderate with extremely hot or cold temperatures being a rare occurrence. Port Elizabeth is affectionately known as "The Windy City" and certainly lives up to this name. However, residents have used this element to their advantage in a number of activities that visitors can join in on.

Typical to the Eastern Cape, Nelson Mandela Bay too has a number of wildlife parks and animal watching opportunities with Addo Elephant National Park just outside of the city. Not only can you see animals in their natural habitat on land, but in the sea too. This area is home to a rich variety of sea life including whales, sharks and penguins.

Come and discover the beauty, spirit, friendly nature and freedom that Nelson Mandela Bay has to offer.



ADDO ELEPHANT NATIONAL PARK



WHALE WATCHING

TOP TEN WAYS TO Experience Nelson Mandela Bay

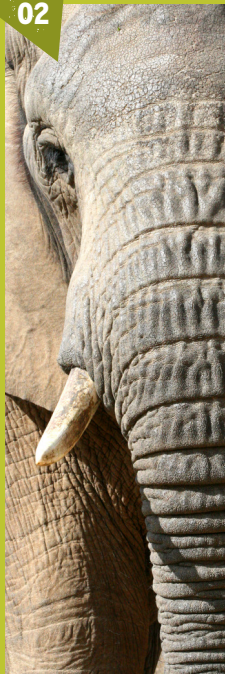
01



ALGOA BAY HOPE SPOT EXPERIENCE - PENGUIN PATROL

'Hope Spots' are particular locations that have been marked out as 'protected' in order to sustain the health of the ocean. There are six Hope Spots along South Africa's coastline with the Algoa Bay Hope Spot being one. This spot was chosen due to the rich marine life and the endangered African penguin, in particular. The experience involves taking a boat cruise out to St Croix Island where you can see these birds living happily in their natural environment. It certainly is a sight to behold and one that many may not be fortunate enough to see due to the excessive oil spills in the ocean. After seeing the penguins in their natural habitat, learn more about them at the rehabilitation and education centre at the Cape Recife Nature Reserve. Next on the itinerary is a visit to Bayworld Museum and Snake Park. This experience is not only enjoyable but educational, as you learn more about the importance of conserving sea life.

02



ORIGINAL BIG 7 SAFARI EXPERIENCE

See all of the incredible Big 7 in just one day with this safari experience! The Big 7 consists of the five animals which make up the Big 5 - the African elephant, Cape buffalo, leopard, rhino and lion - and adds on two with the great white shark and seasonal southern right whale.

Start off the morning searching for dolphins, seals, sharks and the seasonal humpback and southern right whales in Algoa Bay. Visitors will also have the opportunity to see the largest African penguin breeding colony in the world, located at St Croix Island.

After a light lunch at the harbour of Port Elizabeth, visitors will make their way to the Addo Elephant National Park to see the rest of the promised animals. Game drives are an exciting way to see these animals in their natural environment.

03



MOHAIR EXPERIENCE

Nelson Mandela Bay is host to the epicentre of the world's mohair production at the Hinterveld factory in Uitenage. The Eastern Cape produces 50% of the world's mohair which is exported to a number of countries throughout the world. With a visit to the factory, guests will have the opportunity to see how this mohair is processed and learn about its fascinating history in South Africa.

05



HISTORICAL PORT ELIZABETH EXPERIENCE

There are many ways to see the beautiful architecture and historic buildings in Nelson Mandela Bay but the best way is through booking a guided city tour where you can hear about the history and rich legacy of the area. Being the landing place of the British Settlers and where the Khoisan, British, Dutch, German and Xhosa people first encountered each other, there is much to see and hear about.

Use the Donkin Heritage Trail to explore as it links 51 places of historical interest along its course including the Campanile, City Hall, Donkin Reserve and Lighthouse building. Useful signage is posted along the way to help navigate tourists on their journey.

04



ROUTE 67 EXPERIENCE

With the area being called 'Nelson Mandela Bay', what would a visit to this area be without experiencing and learning more about this well-loved South African legend? Route 67 is made up of 67 Public Art Works which symbolise the 67 years of hard work done by Nelson Mandela in the Freedom of South Africa. The artworks were designed by local artists from the Eastern Cape and celebrates the city's heritage. Walk up the 67 steps leading up to the largest South African flag in the world. Here, you can stand next to the figure of Madiba at the head of the voting line. This is an important and beautiful monument which is a must-see for all who visit the area.

Route 67 begins at the Campanile, goes on to the Vuyisile Mini Market Square in the city centre and meanders up to the Donkin Reserve with the Great Flag being on the top of the hill.

WITH THE VAST NUMBER OF ATTRACTIONS AVAILABLE TO VISITORS, IT COULD BE DIFFICULT TO PICK AND CHOOSE WHAT TO DO IN NELSON MANDELA BAY. CHECK OUT THE LIST NARROWED DOWN TO 10 EXPERIENCES THAT HAVE BEEN HIGHLIGHTED TO MAKE YOUR DECISION EASIER.

06



CULTURAL ENCOUNTERS AND STRUGGLE HEROES EXPERIENCE

Broaden your intercultural understanding with a tour through local communities of Nelson Mandela Bay and experience the everyday life of a Xhosa family. Learn about traditional Xhosa foods, crafts, music and customs to deepen your Eastern Cape experience. Port Elizabeth was the pinnacle for many of the struggles from the Wars of Resistance (1799 - 1895) and holds this history dear. Take the opportunity to hear about the personal hardships people overcame during those times with stories from survivors on offer. There is so much that can be learnt about the fight for freedom in South Africa right here in Nelson Mandela Bay.

07



CRUISING ALGOA BAY

Choose a suitable option from the number of cruises on offer for a scenic experience. The Sundays River Ferry is an awesome outdoor activity with views of spectacular sand dunes and a distant view of Port Elizabeth and Algoa Bay. The calm and peaceful rivers provides a relaxing getaway from the hustle and bustle of the city.

Alternatively, catch a cruise with Raggy Charters to find the wonders of the sea with the chance of seeing whales, dolphins, sharks and the African Penguin colony at St Croix Island.

08



CAPE RECIFE, LIGHTHOUSE AND GRYSBOK NATURE RESERVE 4X4 EXPERIENCE

Cape Recife is the southernmost tip of Algoa Bay. Take a tour here followed by a visit to SAMREC where African black-footed Penguins are rehabilitated into their natural environment. Next is the Cape Recife Lighthouse where you will be able to see a variety of shore birds as well as a climb to the top of the lighthouse.

From the lighthouse, you will cross the main road and enter the Grysbok Game reserve which is the protected area surrounding the Nelson Mandela Metropolitan University (NMMU). A large number of herbivores take refuge here including the Cape grysbok, Burchell's zebra, Red hartebeest and other bush buck.

09



EXPERIENCE ADVENTURE

Nelson Mandela Bay has a vast variety of adventure activities which can be enjoyed by the whole family. Boasting the largest Coastal Dunefields in the Southern Hemisphere, Zipline Africa's longest double zipline, powerboat trips and Supertubes in Jeffreys Bay, the area has much on offer for those who love an adrenaline rush. There are a number of action packed activities which run throughout the year including elephant riding, surfing, hiking, horse riding, sandboarding, fishing, kitesurfing, canoeing, scuba diving, quad biking, rubber ducking, jet-skiing, paragliding, abseiling and many more.

10



GET THE NELSON BAY MANDELA BAY PASS FOR A VARIETY OF EXPERIENCES

The Nelson Bay Mandela Bay Pass is a smartcard access card which provides you with free admission to a variety of attractions and activities in the area and is great value for money. Using this card, you will get access to many museums, game reserves, scuba diving, art galleries, sightseeing tours, adventure activities and more.

Additionally, you will get great discounts throughout your stay. There is a choice between unlimited itinerary passes ranging from one to seven days or the five in one NMB Pass with rates starting from only R300.

This is the best, and cheapest, way to experience this exquisite area!

FOR MORE
INFORMATION
CONTACT:

NELSON MANDELA BAY TOURISM: Email: info@nmbt.co.za | Web: www.nmbt.co.za | www.facebook.com/nelsonmandelabay | Tel: 041 582 2575/3
DONKIN: Donkin Reserve, Belmont Terrace, Central | Tel: +27 (0) 41 585 8884 | Fax: +27 (0) 41 585 2564 | donkin@nmbt.co.za
BOARDWALK: Shop 48, The Boardwalk (opp. Hobie Beach), Marine Drive, Summerstrand | Tel: +27 (0) 41 583 2030 | Fax: +27 (0) 41 583 3413 | boardwalk@nmbt.co.za
UITENHAGE: Nelson Mandela Bay Science & Technology Centre, Upper Drosty Road, Uitenhage | Tel: +27 (0) 87 353 1734 | uitenhageco@nmbt.co.za
AIRPORT: Port Elizabeth Airport, Arrivals Hall, Alister Miller Drive, Walmer | Tel: +27 (0) 41 581 0456 | Fax: +27 (0) 41 581 0461 | airport@nmbt.co.za

YOUR SUMMER Calendar

KEEP DISCOVERING THE EASTERN CAPE
BY JOINING IN WITH THESE EXCITING
EVENTS THIS SUMMER SEASON.

BERLIN NOVEMBER

Horse racing and entertainment
Berlin, East London
30 NOVEMBER 2019
Contact: 076 809 9108

ART IN THE PARK

Ann Bryant Art Gallery, Buffalo City
30 NOVEMBER 2019
Contact: 043 727 1297

SWITCHING ON OF THE FESTIVE LIGHTS

Celebrating the switching on of the festive lights
Esplanade Gardens, East London Beach front,
Buffalo City Metro
1 DECEMBER 2019

UNCLE JUMBO'S CHRISTMAS PARTY

Welcome the festive season with friends and family
DF Malherbe School, Port Elizabeth
Tickets available on Computicket
1 DECEMBER 2019
Contact: 0861 915 8000

BILSON PLUMBERS TURBINE TRAIL RUN

Get active and have fun with a summer run
Metrowind Wind Farm, Uitenhage
1 DECEMBER 2019
Contact: Big-O Spot on 071 674 7694

AQUELLE OCEAN RACING SERIES

Hobie Beach, Port Elizabeth
1 DECEMBER 2019 AND 5, 19 JANUARY 2020
Contact: Zsports Events on 041 484 7860

CHIPPA UNITED VS BAROKA FC

Nelson Mandela Bay Stadium, Port Elizabeth
1 December 2019
Contact: 041 408 8900

TASTE OF AFRICA

Billionaires KwaDwesi, Port Elizabeth
1 DECEMBER 2019
For more information contact: Smashed Bunny
Chows on 083 620 8730

ST JAMES RCC PRESENTS CHRISTMAS CAROLS & NINE LESSONS

St James Catholic Church, Port Elizabeth
1 DECEMBER 2019
Contact: Dawn on 041 451 3446 | 079 876 2469

ART IN THE PARK

St Georges Park, Port Elizabeth
1, 8, 15, 22 DECEMBER 2019
Contact: Maureen on 072 600 7132 or
082 257 4691

MZANZI SUPER LEAGUE

St George's Park Cricket Ground, Port Elizabeth
3 DECEMBER 2019
Contact: Leigh Deyzel on 041 585 1646

JAK DE PRIESTER

La Colline, Port Elizabeth
3 DECEMBER 2019
Contact: La Colline on 041 379 5548

UNCLE JUMBO'S CHRISTMAS PARTY

DF Malherbe School, Port Elizabeth
Tickets available on Computicket
3, 4, 6, 7, 8 December 2019
Contact: 0861 915 8000

THE LA GRAND EVENING

Tramways Building, Port Elizabeth
5 DECEMBER 2019
Contact: Neil on 041 457 4199 or 074 118 0225

DIRK VD WESTHUIZEN AT THE BARN

The Barn, Port Elizabeth
6 DECEMBER 2019
Contact: Nicky on 071 320 1504

SCHOOLS ROWING REGATTA

Halyards Hotel, Port Alfred
6 - 7 DECEMBER 2019
Contact: 046 624 1235

BROADWAY & BALLET

Herbet Hurd Primary School, Port Elizabeth
6 - 7 DECEMBER 2019
Contact: Jen on 074 860 7252

SKAL AT THE RACES

Fairview Racecourse, Port Elizabeth
6 DECEMBER 2019
Contact: Phrosne on 082 783 5880

UNDER THE STARS

Hashtag on Main Lifestyle Centre, Port Elizabeth
6 DECEMBER 2019
Contact: 082 773 6852

ROAN ASH LIVE

The Music Kitchen, Port Elizabeth
6 DECEMBER 2019
Contact: 041 364 1964

ROBBIE WESSELS

Die Blou Ballon, Port Elizabeth
7 DECEMBER 2019
Contact: 041 933 1461

SARDS SATURDAY CHRISTMAS MARKET

Sards Bark Park, Port Elizabeth
7 DECEMBER 2019
Contact: Aidon R. Lippstreu on 083 567 6308

UTHIXO UYANQULEKA AWARDS 2ND ANNUAL

NU2 Community Hall, Port Elizabeth
7 DECEMBER 2019
Contact: Mzukisi Mdingi on 072 466 9883

SUMMER COLLECTORS FAIR

Just Vintage Collectibles, Port Elizabeth
7 DECEMBER 2019
Contact: Johan Gerber on 076 110 7313

ARTHUR'S CHRISTMAS WONDERLAND 2019

4 Framesby Villas, Port Elizabeth
7, 14 DECEMBER 2019
Contact: Arthur on 082 565 5216

THEESCOMBE COMMUNITY MARKET

Oasis Church, Port Elizabeth
7 DECEMBER 2019
Contact: Rodger on 084 681 0000

MUSIC AWARDS

Eastern Cape Music Awards - Woza Mzala African
Festival
Abbotsford, East London, Buffalo City Metro
7 DECEMBER 2019
Contact: 083 621 1890

CYCLO PRO LONGMORE CLASSIC

Crossways Farm Village, Port Elizabeth
8 DECEMBER 2019
Contact: 042 286 0939

KENTON SUMMER FESTIVAL

Middle Beach, Kenton-on-Sea
12 DECEMBER 2019 - 8 JANUARY 2020

GARDEN TOWN TOASTMASTERS

Agape Coffee Shop, Uitenhage
12 DECEMBER 2019
Contact: Angie Kivido on 082 417 6522

ALL SUMMER LONG TOUR

Connell Cruise and Charlie Finch
The Music Kitchen, Port Elizabeth
12 DECEMBER 2019
Contact: 041 364 1964
The C Club, Buffalo City
13 DECEMBER 2019

LOVEMORE STANCE

Victoria Nature Park, Port Elizabeth
14 DECEMBER 2019
Contact: Morne on 062 675 4510

HOBBITON MTB RACE

Hogsback
14 DECEMBER 2019
Contact: hobbitons@telkomsa.net

THROUGH OUR EYES: JOURNEY TO AMERICA

Nelson Mandela Metropolitan Art Museum,
Port Elizabeth
14 DECEMBER 2019
Contact: Emma O'Brien on 041 506 2000

BAYWEST MALL ROAD RUN

14 DECEMBER 2019
Contact: 041 492 0330

PADLANGS MARKET DAY

Padlang's Country Restaurant, Patensie
14 DECEMBER 2019
Contact: 042 283 0798

MDANTSANE CARNIVAL

Mdantsane Mall, Buffalo City
10h00 - 19h00
14 DECEMBER 2019

METRO FM HEATWAVE

A day of entertainment, socializing, music and
networking
Buffalo City Stadium, Buffalo City
14 DECEMBER 2019
Contact: 078 110 3801

LOCALLY YOURS CHRISTMAS MARKET

Tramways Building, Port Elizabeth
14 - 17 DECEMBER 2019
Contact: Locally Yours on 082 785 4118

MATTHEW MOLE LIVE AT THE MUSIC KITCHEN

The Music Kitchen, Port Elizabeth
14 DECEMBER 2019
Contact: 041 364 1964

SNOTKOP

The Barn, Port Elizabeth
14 DECEMBER 2019
Contact: 071 320 1504

VD RIET STREET GRUB CRAWL

Van Der Riet Street, Port Alfred
14 DECEMBER 2019
Contact: 046 624 8095

THE PORT ELIZABETH CHRISTMAS EXPO

Walmer Town Hall, Port Elizabeth
15 DECEMBER
Contact: 083 588 5823

BUYEL'EKHAYA PAN AFRICAN MUSIC FESTIVAL

African arts & crafts, fashion, exhibitions, music,
dance and film
Buffalo City Stadium, Buffalo City
15 DECEMBER 2019
Contact: 082 882 9140

BRIGHT LIGHTS, BIG CITY BLUES ROCK BAND

Nieu Bethesda
20h00
15 DECEMBER 2019
Contact: 049 841 1642 | 072 742 7113

FUN RUN

Kelly's Beach, Port Alfred
15 DECEMBER 2019
For more information contact: 046 624 1235

TRIATHLON SUMMER SERIES

Pollock Beach, Port Elizabeth
16, 19, 22, 26 DECEMBER 2019
Contact: Zsports Events 041 484 7860

OPENING OF THE SEASON

Hobie Beach, Port Elizabeth
16 DECEMBER 2019
Contact: Soul Good on 041 364 0028

STUTT-2-SEA

Stutterheim Country Club, Stutterheim
16 DECEMBER 2019

JESSE CLEGG AT THE MUSIC KITCHEN

Emerald Vale Brewery, Buffalo City
15 December 2019
The Music Kitchen, Port Elizabeth
16 DECEMBER 2019
Contact: 041 364 1964

ANNUAL EVERYTHING THAT FLOATS

Wacky Water Park, Jeffreys Bay
16 DECEMBER 2019
Contact: 083 661 5393

JO BLACK IN PORT ELIZABETH

The Boardwalk Amphitheatre, Port Elizabeth
17 DECEMBER 2019
Contact: Anton Pretorius on 083 760 0609

ADAM VIR OULAAS IN PORT ELIZABETH

The Barn, Port Elizabeth
17 DECEMBER 2019
For more information contact: Anton Pretorius on
083 760 0609

JAN BLOHM BAND LIVE AT THE MUSIC KITCHEN

The Music Kitchen, Port Elizabeth
18 DECEMBER 2019
Contact: 041 364 1964

SKANK AND THE ROOTS LIVE CONCERT AGAINST XENOPHOBIA AND WOMEN ABUSE

Allenridge Civic Centre, Uitenhage
18 DECEMBER 2019
Contact: MK on 084 922 3290

KING WILLIAM'S TOWN CARNIVAL

Botanical Gardens, King William's Town
14h00 - 22h00
18 DECEMBER 2019

HOSPICE TREE OF LIGHTS

Carols by candlelight
Hospital Grounds, Port Alfred
19 DECEMBER 2019
Contact: 083 799 1105

ANT-TICKS AT THE MUSEUM

Children's entertainment and education
Kowie Museum, Port Alfred
20 DECEMBER 2019
Contact: 046 624 1235

BAAKENS FOOD TRUCK

The Gallery on Produce, Port Elizabeth
20 DECEMBER 2019
Contact: Grant Foong on 082 367 1864

THE BAY BLUES FESTIVAL

The Music Kitchen, Port Elizabeth
20 DECEMBER 2019
Contact: 041 364 1964

RAY DYLAN IN PORT ELIZABETH

The Barn, Port Elizabeth
20 DECEMBER 2019
Contact: Anton Pretorius on 083 760 0609

ONE AFRICA COMEDY EXPERIENCE

Boardwalk ICC, Port Elizabeth
20 DECEMBER 2019
Contact: Monwabisi Grootboom on 041 507 7777

CHIPPA UNITED VS SUPERSPORT UNITED

Nelson Mandela Bay Stadium, Port Elizabeth
21 DECEMBER 2019
Contact: 041 408 8900

WINDSONG BOHEMIAN SUMMER MARKET

Kaleidoscope and Michelle's Pottery Studio,
Port Elizabeth
21 DECEMBER 2019
Contact: Zahn Hughes on 082 561 2426

FULLY LIT

Dockside the Harbour, Port Elizabeth
21 AND 22 DECEMBER 2019
Contact: Xolisani Ntabeni on 062 916 0054

ONE AFRICA JAZZ EXPERIENCE

Boardwalk ICC, Port Elizabeth
21 DECEMBER 2019
Contact: Monwabisi on 041 507 7777

GUNS N' ROSES & FRIENDS TRIBUTE

The Music Kitchen, Port Elizabeth
21 DECEMBER 2019
Contact: 041 364 1964

KENTON NIGHT SHIFT

Food and crafts
Kariega Road, Kenton-on-Sea
21 DECEMBER 2019
Contact: 073 641 2906

DUNCAN VILLAGE HOMEGROWN FESTIVAL

Gompo Stadium, Buffalo City
21 December 2019
Contact: Computicket on 086 915 8000

ONE DAY CRICKET: EASTERN PROVINCE VS FREE STATE

St George's Park, Port Elizabeth
22 DECEMBER 2019
Contact: EP Cricket 041 585 1646

SARDS SUNDAY CHRISTMAS MARKET

Sards Bark Park, Port Elizabeth
22 DECEMBER 2019
Contact: Aidon R. Lippstreu on 083 567 6308

BAY SUMMER FEST

Nelson Mandela Bay Stadium, Port Elizabeth
22 DECEMBER 2019

RADIO KALAHARI ORKES LIVE AT THE MUSIC KITCHEN

The Music Kitchen, Port Elizabeth
22 DECEMBER 2019
Contact: 041 364 1964

OUTDOOR CINEMA & CAROLS

Happy Valley, Port Elizabeth
22 DECEMBER 2019
Contact: Soul Good on 041 364 0028

UITENHAGE PICNIC

Willow Dam, Uitenhage
23 DECEMBER 2019
Contact: Soul Good on 041 364 0028

KOWIE STRIDERS FUN RUN

5km and 8km. Sports Field, Port Alfred
26 DECEMBER 2019
Contact: 082 568 4378

NATIVES SUMMER PARTY

Outdoor events
Mthatha High Sports Field, Mthatha
26 DECEMBER 2019
Contact: 073 169 5292 | 063 543 3050

LONDON ROOTS

Concert
Buffalo City Stadium, Buffalo City
26 DECEMBER 2019
Contact: 043 748 6151 | 083 375 5966

HARCOURTS SANDCASTLE COMPETITION

Sandcastle building
Kelly's Beach, Port Alfred
26 DECEMBER 2019
Contact: 046 624 5222

EBUBELENI URBAN FESTIVAL 2019

Hip Hop vs Ggom vs Amapiano
Nelson Mandela Bay Stadium, Port Elizabeth
27 DECEMBER 2019

JAY IN PORT ELIZABETH

The Barn, Port Elizabeth
27 DECEMBER 2019
Contact: Anton on 083 760 0609

THE PARLOTONES LIVE

The Music Kitchen, Port Elizabeth
27 DECEMBER 2019
Contact: 041 364 1964

EBUBELENI COMEDY

The Boardwalk Convention Centre, Port Elizabeth
28 DECEMBER 2019

BATHURST OX BRAAI

Music and entertainment
Bathurst Show Grounds, Bathurst
28 DECEMBER 2019
Contact: 079 948 3253

KOWIE ANYTHING THAT FLOATS

Float up the river
28 DECEMBER 2019
Contact: 072 119 9753

FLOAT TO HORNS UP

River float with after-party
Kariega River, Kenton-on-Sea
29 DECEMBER 2019
Contact: 082 788 0176

THE RE-SECONDS MARKET

Walmer Town Hall, Port Elizabeth
29 DECEMBER 2019
Contact: 083 588 5823

MARK HAZE - A TRIBUTE TO BON JOVI AND THE MASTERS OF ROCK

The Music Kitchen, Port Elizabeth
29 DECEMBER 2019
Contact 041 364 1964

OLD YEAR'S EVE BRING & BRAAI

Nieu Bethesda
30 DECEMBER 2019
Contact: 049 841 1642 | 072 742 7113

FESTIVAL OF LIGHTS

Make a lantern and join the parade through
the village
Nieu Bethesda
30 DECEMBER 2019
Contact: 049 841 1731

EBUBELENI MUSIC FESTIVAL

Nelson Mandela Bay Stadium, Port Elizabeth
30 DECEMBER 2019
Contact: 041 582 2553 | 076 771 4062

NEW YEAR'S EVE

Hobie Beach and Wells Estate, Port Elizabeth
31 DECEMBER 2019
Contact: Soul Good on 041 364 0028

5TH ANNUAL SINOQOBILE GOSPEL EXTRAVAGANZA

Orient Theatre, Buffalo City
31 December 2019
Contact: Computicket on 0861 915 8000

COUNTDOWN MUSIC FESTIVAL

Buffalo City Stadium, Buffalo City
31 DECEMBER 2019

STRAATLIGKINDERS

The Music Kitchen, Port Elizabeth
3 JANUARY 2020
Contact: 041 364 1964

ARNO CARSTENS

The Music Kitchen, Port Elizabeth
4 JANUARY 2020
Contact: 041 364 1964

CRICKET: SOUTH AFRICA VS ENGLAND

St George's Park Park Drive, Port Elizabeth
16 JANUARY 2020
Contact: EP Cricket on 041 585 1646

RUNNING WATERS BRIDAL EXPO

Running Waters Wedding & Conference Running
Waters, Port Elizabeth
25 - 26 JANUARY 2020
Contact: Eben Geber on 041 811 6436

MR GAY WORLD SOUTH AFRICA

Tramways Building, Port Elizabeth
31 JANUARY 2020
Contact: Antonie Pieterse on 083 447 7008

UNCLE NICK'S PRAWN, CHICKEN AND OCTOPUS FESTIVAL

Hellenic Hall, Port Elizabeth
31 JANUARY 2020
Contact: Olga Williams on 082 990 1708

100 REASONS TO explore THE EASTERN CAPE

Your guide to discovering, experiencing and exploring the best that the province has to offer.

Download your copy now
www.visiteasterncape.co.za

Your Summer BUCKET LIST



EXPERIENCE THESE AMAZING PLACES THIS SUMMER! SO MUCH TO SEE AND DO IN THE EASTERN CAPE!

1	Marine Cruise - Nelson Mandela Bay & Buffalo City	
2	Sardine Run - Eastern Cape Coastline	
3	Route 67 - Nelson Mandela Bay	
4	Camino Route - North Eastern Cape Highlands	
5	Karoo Fossils & Owl House - Nieu Bethesda	
6	Amatola Hiking Trail - Hogsback	
7	Baviaanskloof Natural World Heritage Site - Kouga Region	
8	Valley of Desolation - Graaff Reinet Camdeboo National Park	
9	Mountain Zebra National Park - Karoo Heartland Region	
10	Chokka Trail - Oyster Bay & Greater St Francis	
11	Skydive Experience - Grahamstown & Jeffreys Bay	
12	Addo Elephant National Park - Addo	
13	Beach Horse Ride - Jeffreys Bay, Nelson Mandela Bay, Wild Coast	
14	Highest Commercial Bungy Jump -Tsitsikamma Region	
15	Tree Top Canopy Tour - Tsitsikamma Region	
16	Kayak & Lilo Tour - Tsitsikamma Region	
17	Tsitsikamma National Park - Tsitsikamma Region	
18	Township Tour - Nelson Mandela Bay & Buffalo City	
19	Cata Village Experience - Keiskammahoek	
20	Nelson Mandela Museum - Mthatha, Mvezo & Qunu	
21	Karoo Food Tour - Karoo Heartland	
22	Hole in the Wall - Coffee Bay	
23	Magwa Falls - Wild Coast Region	
24	Surf & Supertubes - Jeffreys Bay	
25	Fly Fishing - Karoo Heartland & North Eastern Cape	



TAKE A MICRO-TRIP this summer

IF YOU DON'T HAVE TIME TO GET AWAY ON A HOLIDAY, YOU CAN STILL TAKE TIME OUT AND GET A THRILL ON A SHORT ADVENTURE CLOSE TO HOME

A micro-trip is a short, adventurous journey close to home that is compatible with busy real life!

South Africa is ticking all the right boxes in terms of its affordability, conservation tourism experiences and the very best in adventure experiences. Many more South Africans are heading off on micro-trips to take advantage of the fantastic offerings in their own backyard.

A micro-trip in the Eastern Cape is as simple as penning a date and heading out. How fortunate we are in the Eastern Cape - there's a nature haven or adventure experience on every doorstep!

53% of global travellers reported that they are more into weekend trips right now. Less is more as travellers are offered a more bespoke experience, which costs less and saves time. This also allows them to travel their own country, discovering unique and wonderful places and faces on their doorstep.

Booking.com study



MORGAN BAY BREAKAWAY - TWO NIGHTS

Head to Morgan Bay where you can enjoy time on the beach with a friend or good book, hire a canoe and enjoy a paddle on the lagoon or book a horse riding excursion. Spread these activities out over two days. Enjoy a lunch or dinner at Yellowwoods Forest Lodge or at the Morgan Bay Hotel if you fancy a break from self-catering. Enjoy sundowners and a selfie moment on the Morgan Bay Cliffs. Overnight at an establishment of your choice.



AREENA AND CHINTSA BREAKAWAY - TWO NIGHTS

Head out to Areena Riverside Resort and book into the campsite or one of the chalets or rondavels. Experience the double zipline, a quad bike game drive, a paddle in a canoe on the river or fishing from the banks of the river. An onsite restaurant allows you to pack light. Alternatively enjoy a self-catered braai and an evening under the stars. After breakfast, on day two, take a short drive to Chintsa East and stop at the Emeraldvale Brewery for a craft beer experience. Continue through to Chintsa and check into your accommodation - enjoy some time on the beach, book a beach horse ride or surf lesson or just kick back and relax. Play a game of pool or tennis or enjoy cocktails on the deck if you stay at Crawford's Beach Lodge.



MOUNTAIN ESCAPE - TWO NIGHTS

Head through to Hogsback for an outdoor mountain escape. Visit the local arts and craft and chocolate shop, take a walk to the famous Madonna and Child or Kettle Spout waterfall, walk the Labyrinth at the Edge, visit the Dianna Graham Eco Shrine, hire a mountain bike and explore a forest trail, dine at one of the local eateries, enjoy a fireside dinner or just recharge your batteries in a beautiful garden surrounded by nature. Overnight at any one of the local establishments that suits your budget - self catering options are available.



SUNSHINE COAST - TWO NIGHTS

Travel through to Bathurst for a browse around the arts and craft shops and enjoy a lunch at a local eatery amidst the banter of the locals. Visit the Big Pineapple and then head through to Port Alfred or Kenton-on-Sea to enjoy a change of coastal and river scenery. Local shops are available to stock up on self-catering items and restaurants are available for that special cocktail, mocktail, coffee and lunch or dinner. Book a river cruise up the Kowie, Bushmans or Kariega rivers or just enjoy a walk along one of the blue flag beaches. Both destinations have lovely curio shops to explore.



CROSS THE KEI - TWO NIGHTS

Head out to Morgan Bay for a brunch and then cross the Great Kei River using the local pontoon. Head to Trennerys or Seagulls hotel for a true Wild Coast breakaway. Book an excursion to the Gates and learn something about the local culture with Trevor's Trails. Enjoy a beach walk to view the remnants of the Jacaranda wreck, enjoy the Saturday night seafood buffet and make the most of the hotel facilities / amenities on offer. Overnight at one of the hotels and enjoy being catered for.



BIG 7 BREAKAWAY - TWO NIGHTS

Travel to Addo Elephant National Park and enjoy a self-guided game drive with a packed picnic lunch. Stop at one of the designated picnic spots or treat yourself to a lunch at the local main camp restaurant. In the afternoon head through to Port Elizabeth and check into your accommodation - choose from hotels, guest houses, B&B's to self-catering apartments and campsites. Enjoy dinner at any one of the many restaurants Port Elizabeth has to offer. On the morning of day two enjoy a marine safari with one of the licensed whale and dolphin watching operators and then in the afternoon take some time out to explore Route 67, enjoy a beachfront Segway ride or some retail therapy, ten pin bowling, ice-skating, an Imax movie or some craft beer tasting at Beershack, Richmond Hill Brewing Company or Bridgestreet Brewery - ending of with another delectable dinner as a local eatery.



KAROO ESCAPE - TWO NIGHTS

Travel to the beautiful town of Graaff Reinet and enjoy exploring museums, craft shops and local eateries and coffee shops before taking time out to visit the Camdeboo National Park for a self-guided game drive. Visit the incredible Valley of Desolation or book a guided trip through Karoo Connections or Karoo Park Guest House. Overnight at any one of the many comfortable accommodation establishments and enjoy the tastes of the Karoo at one of the local restaurants. The Camdeboo National Park also offers chalet style accommodation for those looking for an out-of-town experience. On day two take a self-drive trip to Nieu-Bethesda for a visit to the Owl House and then head off to Ganora Guest Farm a mere 8.5 km away (or choose from a variety of accommodation options). Enjoy a guided fossil excursion, which includes a visit and talk in the fossil museum, a rock art excursion or a gentle walk around the farm. Dinner can be catered for if you want to give self-catering a miss.



KAROO HEARTLAND - THREE NIGHTS

Travel to Cradock and visit the Olive Schreiner Museum and visit the Cradock Four Memorial site. Chat to Amos at Die Tuishuise - he is a brilliant local guide who, for a nominal fee, can take you on a local excursion (pre-book this). Enjoy a meal at a local eatery and overnight in one of the historic Tuishuise, the Victoria Manor Hotel or any other establishment. On day two, travel the 20km to the Mountain Zebra National Park. Spend the night and the next day take a self-drive through the park or book a guided game drive or the cheetah tracking excursion. On day three try your hand at wild fly fishing. Take a trip to Somerset East where you can learn this skill from a local fly fisherman. Treat yourself to one night at the Angler and Antelope guesthouse or at any of the local establishments.



SUN, SAND, SURF AND CALAMARI - TWO NIGHTS

Explore the delightful towns of Jeffreys Bay and St Francis Bay. You will find a range of accommodation options to suit your budget. Try your hand at surfing, stand up paddle boarding, or sandboarding. Take a canal cruise, visit the shell or surf museum, taste local calamari, enjoy a round of golf at the St Francis Links or opt for a day tour excursion into the Baviaanskloof Natural World Heritage Site. There is a world of adventure to be experienced here.



ACTIVE ADVENTURE - TWO NIGHTS

Head off to Cape St Francis and try out a Walk on the Wildside which is a shortened version of the Chokka Trail hiking experience. You will be based in Cape St Francis for two nights and can explore the wonderful coastline and key tourism sites on foot with an experienced guide. A great active escape for young and old!



ADRENALINE AND ADVENTURE - TWO NIGHTS

Head to Stormsriver in the heart of Tsitiskamma and set your pulse racing with any one or more of the adventure activities on offer from a Bungee Jump off the highest bridge in Africa to the waterfall or tree top canopy zipline experiences, quad biking and Segway tours through the forest, hiking and biking trails, blackwater tubing, kayak and lilo experience or a gentle walk in the Garden Route National Park. There are lots of accommodation establishments to choose from and some local restaurants and watering holes to calm the adrenaline-fueled appetites.



HIGHLAND ADVENTURES - THREE NIGHTS

Head into the North Eastern Cape, fondly referred to as the highlands, and spend time around Dordrecht, Barkley East, Elliot, Maclear, Lady Grey, Elliot or Rhodes. Guest farm stays are popular but there are some lovely guesthouses and B&B's in the towns. Clear mountain streams hail the fly fishermen and high mountain passes call out to the 4x4 enthusiasts. In the winter months, a snow-skiing experience at Tiffendel Ski Resort is a must. This region is a birdwatchers paradise and a visit to the Lammergeier Highlands Reserve will not disappoint. Spend three nights in one location using it as a base to explore the region.

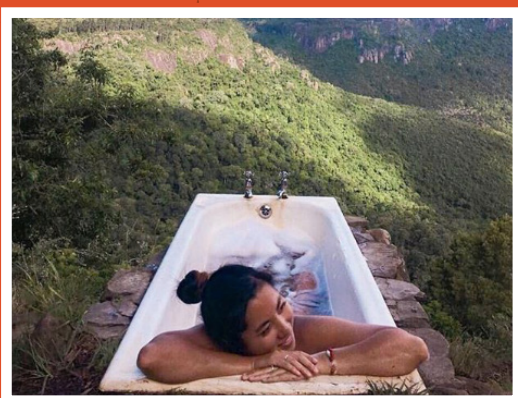


ADDO'S ELLIES

If you're in PE, Addo Elephant National Park is a 30-minute drive, making a quick wildlife adventure the perfect micro-trip. Get off work a little early and drive either the Mbotyi or Vukani loop (look out for lion here). Rise and shine early the following day to experience a good game drive on the way back.

INSTA *inspiration*

Who better to ask for advice on exciting Eastern Cape experiences than those who've experienced it?



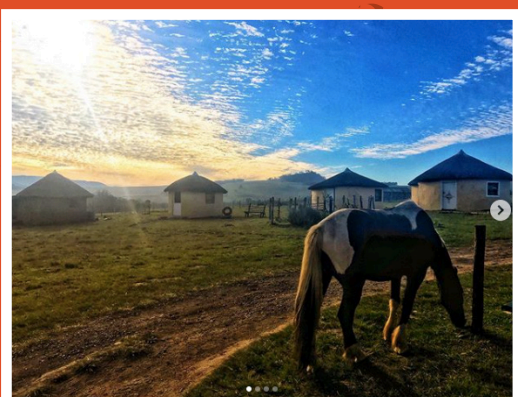
Rejuvenate your soul with a visit to Away with the Fairies Backpackers in Hogsback. You'll leave feeling refreshed and revived!

Photo credit: meetsouthafrica.



The famous port of East London.

Photo Credit: iloveeastlondon



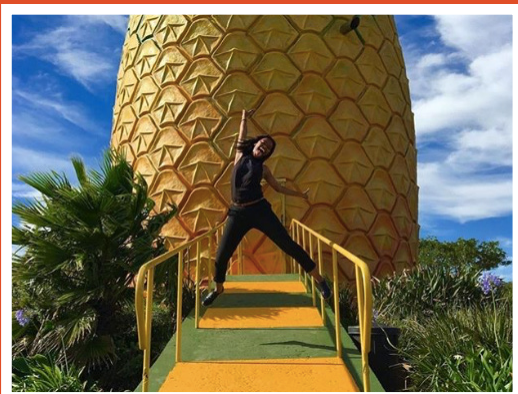
As well as feeling like you're staying amongst the fairies, you can experience beautiful landscapes and skies in Hogsback.

Photo credit: terrakhaya



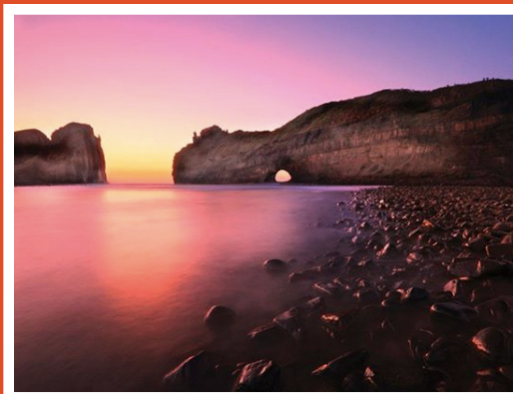
The interesting sights found in the eclectic city of Port Elizabeth.

Photo credit: africanaspects



Taste the most delicious pineapples locally grown at The Big Pineapple in Bathurst.

Photo credit: shotleft.



The unique and must-see Hole in the Wall.

Photo credit: Marius Labuschagne



Visit one of the Eastern Cape's coastline gems, Morgan's Bay. Sit on the Kranses while enjoying the exquisite sunsets.

Photo credit: backyard_adventure_s



Port St Francis showing off its stunning coastline.

Photo credit: experienceatcape



Eastern Cape's prized river, the Great Fish River, which runs through the province can be seen at its best at the Great Fish River Nature Reserve.

Photo credit: getawaymagazine



Hankey overlooking the glorious Gamtoos valley.

Photo credit: fireflyafrica



EXPERIENCE EC's flavour

NOT ONLY DOES THE EASTERN CAPE CATER FOR YOUR SIGHTSEEING AND ADVENTURE NEEDS, IT ALSO BOASTS SOME OF THE BEST FOOD. IF YOU'RE AT A LOSS ABOUT WHERE TO TASTE THE FLAVOURS OF THIS ECLECTIC PROVINCE, HERE'S A LIST OF TRIP ADVISOR'S TOP 10 PICKS:

01

MUSE RESTAURANT (PORT ELIZABETH)

European, Contemporary cuisine (Vegetarian, Vegan and Gluten free options). Putting emphasis on making their food look amazing, this Richmond Hill restaurant is known for their creativity with food and incorporating exciting seasonal flavours into each dish.

02

BACKSTREET GRILL (PORT ELIZABETH)

Steakhouse, Grill (Gluten free options) Creating a warm and cosy environment for their patrons, the Backstreet Grill makes an excellent steak and has a fine choice of wines. This is a must-try for enthusiastic steak-lovers and promises to be a wonderful evening.

03

RAMBLING ROSE GARDEN CAFÉ (ST FRANCIS BAY)

Café, International (Vegetarian, Vegan and Gluten free options). As said in its name, this café is set in a quaint little garden and is a perfect mealtime visit for families. Accommodating those who are up for an afternoon tea and those hungry for more, this unique spot has a lot on the menu.

04

TASTY TABLE (JEFFREYS BAY)

Café, Contemporary, Healthy (Vegetarian, Vegan and Gluten free options). This is a destination stop after the beach, with a frontal sea view. Tasty Table has a variety of options from snacks and speciality coffee to full seafood meals. It comes highly recommended to experience Eastern Cape's hospitality.

05

KITCHEN WINDOWS (JEFFREYS BAY)

Local cuisine, Seafood, Mediterranean (Vegetarian, Vegan and Gluten free options). This is an ideal spot to eat seafood with the sea in view. The restaurant offers a wide range of food in a sublime setting. Enjoy a cold beer while the children play on the grass.

06

STICKY FINGERS KITCHEN (PORT ELIZABETH)

Steakhouse, Barbecue. A great idea for steak-lovers but done in a slightly different way. The restaurant has a relaxed and easy vibe with superb hosting and an intriguing menu.

07

SANOOK CAFÉ (EAST LONDON)

Local cuisine, Italian, American, Pizza and Vegetarian (Vegan and Gluten free options). A favourite in the area, Sanook can cater for all individual tastes with an extensive menu of both food and drinks. The service is outstanding and the atmosphere in the restaurant will have you coming back for more.

08

SUKI SUSHI AND ASIAN CUISINE (PORT ELIZABETH)

Japanese, Asian, Sushi, Thai. If you're looking for a fun evening out and enjoy fresh, tasty sushi or Asian food, Suki Sushi and Asian cuisine is just the place. Covering an array of different cuisines, you are most likely to find something you'll love.

09

OUR YARD (GRAAFF REINET)

Café, International, Deli (Vegetarian, Vegan and Gluten free options). With delicious food and excellent service, this stop will not disappoint if you are visiting this delightful town. Said to have the best coffee in town, this is also a good choice for a brunch or breakfast.

10

INFOOD BAKERY AND DELI (JEFFREYS BAY)

Café, Deli, International (Vegetarian, Vegan and Gluten free options). This restaurant provides healthy and delicious alternatives with everything freshly made and sourced. This is a well-love local spot to meet for coffee, good service and exceptional food.

SHAKE IT UP

cocktails & mocktails

WHAT WOULD SUMMER
BE WITHOUT TIME TO SIT
BACK AND RELAX WITH
SOMETHING COOL TO KEEP
THINGS FRESH!



MOCKTAILS

WATERMELON-LIME COOLER

WHAT'S IN IT?

12 cups frozen seedless watermelon, cubed
4 teaspoons of grated lime zest
6 cups chilled ginger ale

Method:

Place 4 cups of the frozen watermelon, half a teaspoon of lime zest and 2 cups of ginger ale into the blender. Cover and process until slushy. Decorate with mint leaves and serve immediately. Repeat this twice with the remainder of the ingredients.

PINEAPPLE AND LIME MOCKTAIL

(from Good Food magazine)

What's in it? (Makes 4)

1 teaspoon clear honey
Small bunch coriander leaves
Juice of 1 lime
750ml pineapple juice
Handful of ice
400ml tonic water

METHOD:

Using the honey as a glaze for the glasses, brush it along the sides of the glasses and place them in the fridge. Chop up the coriander leaves and place in a shaker with the lime juice, 100ml pineapple juice and a handful of ice. Shake it up! Once the shaker feels cold, divide the syrup into the glass and top up with extra ice cubes, the rest of the pineapple juice and tonic water.

CRANBERRY ORANGE MOCKTAIL

WHAT'S IN IT?

3 cups cranberry cocktail, chilled
3 cups orange juice, chilled
1 litre Sprite or Sprite Zero

METHOD:

In a large punch bowl, mix the juices together. Slowly add in the Sprite and mix together, if necessary. Serve immediately in cups over ice. Decorate with cranberries and orange slices.

COCKTAILS

SUNSHINE COAST PINEAPPLE AND CINNAMON MARGARITA

WHAT'S IN IT?

1 cup sugar
10 - 11 lime wedges
2 - 3 cups tequila
1 cup superfine or icing sugar
Ice cubes
1 teaspoon ground cinnamon
3 cups Triple Sec or orange liqueur
1 ½ cups freshly squeezed lime juice
2 cups pineapple juice
Cinnamon sticks (optional)

METHOD:

Mix the superfine sugar and cinnamon in a small bowl until combined. Place the sugar mixture on a small plate. Rub the rims of eight glasses with lime and dip the rims in the sugar mixture.

In a pitcher, combine the Triple Sec, tequila, lime juice and sugar. Stir until the sugar is dissolved. Add the pineapple juice to the tequila mixture and stir. Chill until ready to serve.

Place ice cubes into the sugar-rimmed glasses and pour the tequila mixture over. Garnish with cinnamon sticks.

GIN IT UP!

GRAPEFRUIT AND PINK PEPPERCORN:

30ml grapefruit juice
40ml gin of your choice
Tonic water to top up
Handful of pink peppercorns

Use plenty of ice and combine the ingredients. Garnish with a slice of grapefruit.

PEACH AND THYME:

3-4 fresh peach slices (orange, mango and nectarine slices also work in this combination)
50ml gin of your choice
Tonic water to top up
Sprig of fresh thyme

Pour your gin and tonic over ice and add the fruit slices. Garnish with thyme.

CUCUMBER AND BASIL:

5 cucumber slices
4 fresh basil leaves
2 tablespoons lime juice
40ml gin of your choice
Tonic water to top up

Combine the cucumber, basil and lime juice. Add the gin and fill the glass with ice cubes. Add the tonic water and garnish with a sprig of Basil.

SNAP, TAG, SHARE &

WIN



A WEEKEND AWAY FOR 8 PEOPLE
WORTH OVER R20 000



IT'S EASY TO ENTER:

1 SNAP

snap a pic at one of the ECPTA Provincial Nature Reserves.

2 TAG

post your pic on social media platforms using the hashtags #visiteasterncape and #snaptagshare.

3 SHARE

Share your post with your friends and followers.

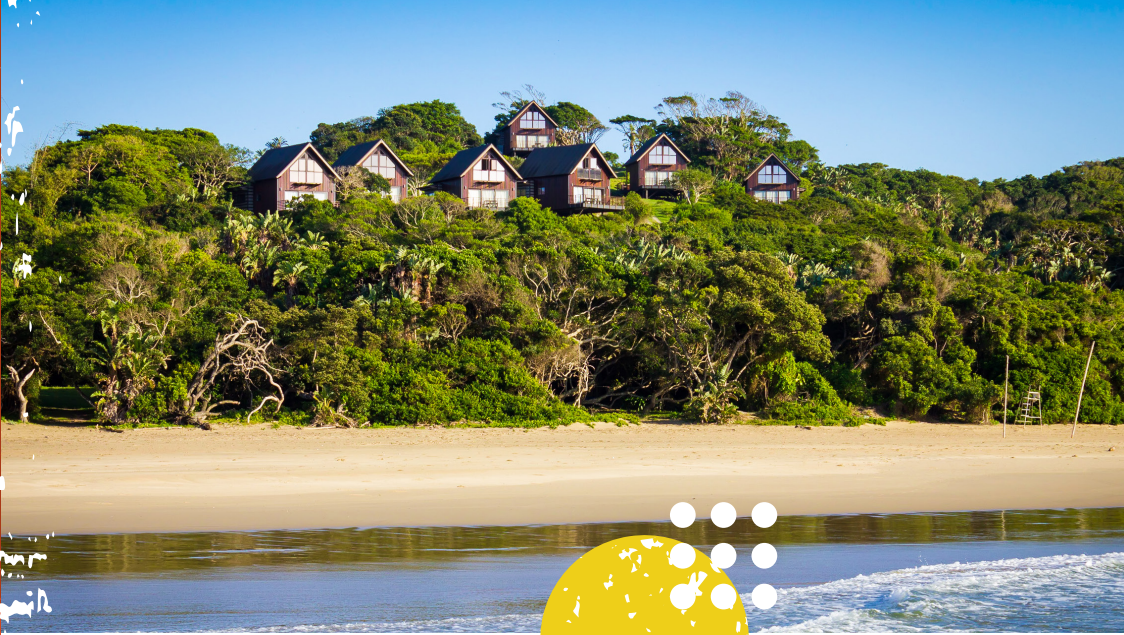
[f/Eastern Cape Tourism](#)

[t/EC_Tourism](#)

[i/easterncapetourism](#)

COMPETITION ENDS
31 DECEMBER 2019

WINNER ANNOUNCED
10 JANUARY 2020



ACCOMMODATION

Partially hidden on the hillside, overlooking the beach, are seven beautiful double-story chalets with luxurious bathrooms, big windows and sun decks overlooking the Indian Ocean. Each chalet offers modern interior spaces fully equipped with appliances, a television and all the amenities necessary for a relaxing stay. Accommodation is self-catering.

- **FAMILY CHALETs (7):** Double-story chalets - 2 bedrooms (with 1 double and 2 + beds), 2 bathrooms - each sleeps 4

Although there is a small shop 5km outside the main gate for a few basic supplies, all catering requirements need to be brought in with you, including drinking water.



HLULEKA

Nature Reserve

Hluleka is a 772ha coastal paradise. From the top of the grassy hill at the entrance to Hluleka, an incredible panoramic view along the coastline sets the scene for a perfect getaway with coves, white sandy beaches lined with palms, and magnificent indigenous coastal forest. Hluleka is an excellent birding destination and sightings of dolphins and whales add to the joy of the wildlife wonder that Hluleka offers.

The accommodation at Hluleka is superb - seven chalets with exquisite views situated on a small hilltop covered in old indigenous trees, striking orange strelitzias and grassy areas where Burchell's zebra roam and graze.

GPS COORDINATES

S 31.8 | E 29.3



DIRECTIONS

Take the R61 (Port St Johns Road) and turn right onto the Hluleka Nature Reserve gravel road, which continues for 47km until the entrance.

CONTACTS

reservations@ecpta.co.za
043 492 0883/4
<http://bookonline.ecpta.co.za/>



BIRDS

- ☐ Natal spurfowl
- ☐ Brown-hooded kingfisher
- ☐ Trumpeter hornbill
- ☐ Black cuckoo
- ☐ Diderick cuckoo
- ☐ Burchell's coucal
- ☐ Knysna turaco
- ☐ African goshawk
- ☐ Long-crested eagle
- ☐ Double-collared sunbird

ANIMALS

- ☐ Blue duiker
- ☐ Vervet monkey
- ☐ Rock hyrax (dassie)
- ☐ Tree hyrax (dassie)
- ☐ Bushbuck
- ☐ Mongoose
- ☐ Spotted genet
- ☐ Dolphin
- ☐ Whale
- ☐ Burchell's zebra

PLANTS

- ☐ Coral tree
- ☐ Mzembeet
- ☐ Sneezewood
- ☐ Fig tree
- ☐ Red milkwood
- ☐ Natal plum
- ☐ Yellowwood

ACTIVITIES

- Swimming
- Picnicking
- Bird-watching
- Hiking
- Walking
- Dolphin & whale viewing
- Self game-drive
- Fishing outside the reserve (fishing +100m from main gate)

All activities are at own risk. Additional fees apply for certain activities and conservation fees apply to day visitors.



NEAREST TOWNS

- NGQELENI - 60km
- MTHATHA - 89km
- PORT ST JOHNS - 110km



RECOMMENDED VEHICLE

Sedan / High clearance
(2x4 or 4x4)



ANOTHER WONDER OF THE EASTERN CAPE IS ITS EXQUISITE NATURE RESERVES.

Showcasing the Eastern Cape's natural beauty, a visit to one of the nature reserves is a must-do when exploring.



SILAKA

Nature Reserve

400ha of unspoiled wilderness, Silaka is an idyllic coastal reserve, seven kilometres south of Port St Johns. Silaka stretches from Second Beach to Sugarloaf Rock and up the valley where lush green indigenous forests cover the hills.

The pristine beach is perfect for fishing and swimming. Hiking trails lead up onto the bluff, affording incredible views of the coastline. The Gxwaleni River flows through the valley, trickling through a wetland and forming a small lagoon before entering the sea. Bird Rock stands like a sentinel in the middle of the bay. This rocky outcrop is the perfect perch for white-breasted cormorant and other sea birds. Silaka is a haven for many species of wildlife and is an excellent birding destination.

CONTACTS
reservations@ecpta.co.za
043 492 0883/4
<http://bookonline.ecpta.co.za/>



PERMITS REQUIRED
Fishing

DIRECTIONS
From Port St Johns, continue past Second Beach onto the gravel road, which leads to the Reserve.

- BIRDS**
- ☐ Fish eagle
 - ☐ Crowned eagle
 - ☐ Knysna turaco
 - ☐ Paradise flycatcher
 - ☐ Kingfisher species
 - ☐ White-breasted cormorant
 - ☐ Rameron pigeon
 - ☐ Trumpeter hornbill
 - ☐ Redshouldered hawk
 - ☐ Yellow throated longclaw
 - ☐ Common waxbill,
 - ☐ Croaking cisticola
 - ☐ Orange throated long-claw
 - ☐ Ground hornbill
 - ☐ Gurneys
 - ☐ Greater double collared sunbird

- ANIMALS**
- ☐ Bushbuck
 - ☐ Blue duiker
 - ☐ Mongoose
 - ☐ Samango monkey
 - ☐ Vervet monkey
 - ☐ Bush pig
 - ☐ Porcupine
 - ☐ Spotted genet
 - ☐ Caracal
 - ☐ Whale
 - ☐ Blue dolphin

- PLANTS**
- ☐ Cycad
 - ☐ Impatiens flanaganiae (vulnerable)
 - ☐ Begonia dregei (endangered)
 - ☐ Milkwood
 - ☐ Umzimbeet
 - ☐ Strelizia

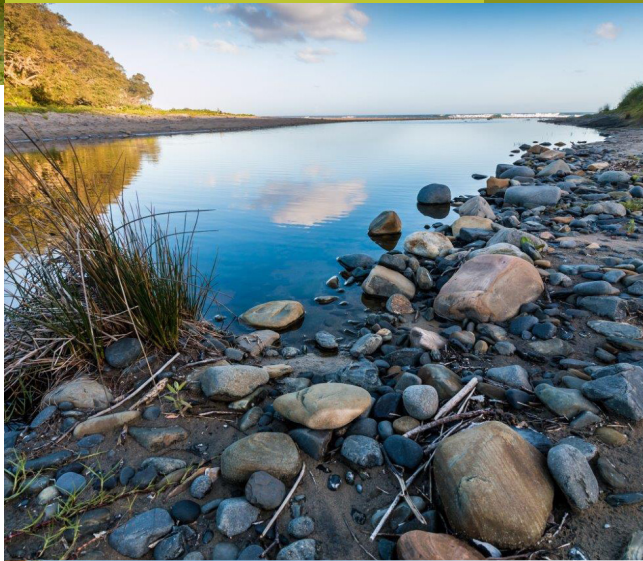


ACCOMMODATION
Seventeen rustic thatched chalets spread across the forested hillside, some with magnificent views overlooking the bay. All accommodation is self-catering. A conference venue is available for 40 people.

- * **4 SLEEPER CHALETs (15):** - 2 bedrooms, 1 bathroom - each sleeps 4
- * **2 SLEEPER CHALETs (2):** - 1 bedroom, 1 bathroom - each sleeps 2

DAY VISITOR FACILITIES

- Picnic sites
- Braai facilities just off the beach



- ACTIVITIES**
- Hiking
 - Swimming
 - Birding
 - Whale watching
 - Dolphin watching
 - Fishing (with permits)
 - Photographic opportunities



NEAREST TOWNS

- PORT ST JOHNS - 7km
- LUSIKISIKI - 46km
- MTHATHA - 90km

GPS COORDINATES
S 31.3 | E 29.9

RECOMMENDED VEHICLE
Sedan



DAY VISITOR FACILITIES

- Braai facilities



O'BELLS SHIPWRECK SITE

The O'Bell ran aground in the early 1900s. Scant information has survived, but it is suggested the vessel was en route to Maputo (then Lorenzo Marques) when she floundered off the Dwesa coast in rough seas. Fortunately all aboard survived and made it safely to land.



PERMITS REQUIRED

Recreational permit
Catch and release fishing is allowed

ACTIVITIES

- Swimming
- Hiking
- Mountain biking
- Bird watching
- Fishing (catch & release - only keep one fish per day - not leave with it)
- Camping
- Caravanning
- Guided and non-guided game viewing (only designated private tour guide)
- Forest walks
- Cycling
- Explore:
 - O'Bell Shipwreck site (1916)
 - Mbashe River Estuary (fish breeding site)
 - Kobolo Viewpoint - game viewing (crocodiles may be seen)
 - Dwesa Point - game viewing
 - Magonya Hills - whale and dolphin viewing
 - Mendu point - whale and dolphin lookout
 - Mbanyana Falls (Cwebe)
 - Coastal indigenous forest

NEARBY ATTRACTIONS

- Nqabara River Mouth with boat launching site



NEAREST TOWNS

- WILLOWVALE - 48km
- DUTYWA - 83km
- MTHATHA - 160km



RECOMMENDED VEHICLE
High clearance (2x4 or 4x4)

DWESA-CWEBE

Nature Reserve

Straddling the impressive, 140km Mbashe River on the Transkei Wild Coast, the Dwesa and Cwebe Nature Reserves are situated in one of the Eastern Cape's most unspoilt coastal conservation areas. Birdlife at these reserves is truly incredible. More than 200 terrestrial and coastal species have been recorded including the globally threatened spotted ground thrush, which breeds here. The coastal mangroves hold the only protected breeding population of mangrove kingfisher in South Africa. Featuring a range of low-, medium- and high-impact hiking trails through thick coastal forest, this is the ideal setting for visitors wanting to get back to nature.

While similar in vegetation, the two reserves nonetheless have individual identities. Dwesa, the larger of the two, features a bigger variety of game, while Cwebe boasts a more diverse habitat, from forest and grassland to lush mangroves. Situated on the edge of a tranquil lagoon, seven exquisite timber chalets are hidden deep in the trees. A short walk through the dune forest reveals a perfect, unspoiled shelly beach with fascinating rock pools. The campsite is sheltered by the forest and bluff.

Spectacular views from Kobole Point and of the nearby waterfall are definite highlights.

DIRECTIONS

Idutywa to Willowvale 30km
Willowvale to Dwesa Nature Reserve 48km (gravel road)



CONTACTS

reservations@ecpta.co.za
043 492 0883/4
<http://bookonline.ecpta.co.za/>

BIRDS

- ☐ Spotted ground thrush
- ☐ Red-necked spurfowl
- ☐ Lemon dove
- ☐ Trumpeter hornbill
- ☐ Crowned hornbill
- ☐ Knysna turaco
- ☐ Olive woodpecker
- ☐ Forest buzzard
- ☐ Crowned eagle
- ☐ Rufous-breasted sparrowhawk
- ☐ African wood owl
- ☐ African black oystercatcher
- ☐ Narina trogon
- ☐ Kelp gull
- ☐ Black headed heron
- ☐ Mangrove kingfisher

ANIMALS

- ☐ African buffalo
- ☐ Burchell's zebra
- ☐ Eland
- ☐ Crocodile
- ☐ Blue duiker
- ☐ Caracal
- ☐ Spotted genet
- ☐ Black backed jackal
- ☐ Dolphin
- ☐ Whale

PLANTS

- ☐ Coastal fynbos:
 - Protea spp. (dwarf)
 - Coastal Machia
 - Reeds
- ☐ Coastal forest indigenous trees:
 - Yellowwood,
 - Umzimbeet
 - Umthombothi



GPS COORDINATES
S -32.3 | E 28.9
(Dwesa)





MKHAMBATHI

Nature Reserve

The reserve, comprising 7 720ha including coastal land, is situated on the coast of northeastern Pondoland, between Port Edward and Port St Johns. The Mkhambathi River makes its way through the reserve, over a series of cliffs forming breathtaking waterfalls (Horseshoe Falls, Strandloper Falls and Mkhambathi Falls) and a series of pools, before tumbling into the Indian Ocean. Other attractions include a secluded cave in the forest, +/-100m up river from the coast, the spectacular Misty Falls, Four Falls and the Mtentu and Msikaba River gorges where endangered Cape vultures can often be seen circling high above.

Mkhambathi has a diverse natural habitat - ranging from grasslands and wetlands, dune forests and swamps to indigenous forests. It is part of the Pondoland Centre of Endemism - one of 235 sites identified worldwide as having important biodiversity and ecology. Mkhambathi is an International Bird Area and also offers great game viewing opportunities.

The accommodation is rustic, offering visitors a real chance to experience true African wilderness. The Gwe Gwe River and lagoon nearby is ideal for fishing and swimming. Mkhambathi is the perfect place for adventurous travellers.

CONTACTS

reservations@ecpta.co.za
043 492 0883/4
<http://bookonline.ecpta.co.za/>

PERMITS REQUIRED

Fishing (in designated areas)

BIRDS

- ☐ Cape griffon vulture
- ☐ Ground hornbill
- ☐ Trumpeter hornbill
- ☐ Kingfisher
- ☐ Oyster catcher
- ☐ Secretary bird
- ☐ Grey heron
- ☐ White and black-breasted cormorant
- ☐ Seagull species
- ☐ White necked raven
- ☐ Green pigeon

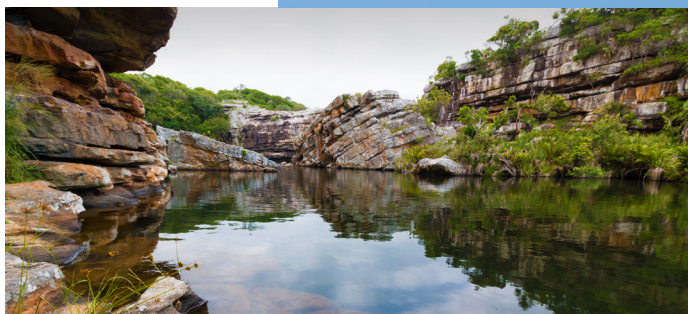
PLANTS

- ☐ Rare and endemic plants and trees:
 - Pondo coconut palm
 - Rasperia
 - Jubaeopsis cafra
- ☐ Indigenous species:
 - Silver tree
 - White stinkwood
 - Forest fever berry
 - Water berry
 - Orange lily
 - Natal mahogany



ANIMALS

- ☐ Eland
- ☐ Plains zebra
- ☐ Red hartebeest
- ☐ Blesbok
- ☐ Reedbuck
- ☐ Bushbuck
- ☐ Blue duiker
- ☐ Kudu
- ☐ Chacma baboon
- ☐ Black backed jackal
- ☐ Bush pig
- ☐ Common duiker
- ☐ Porcupine
- ☐ Vervet monkey
- ☐ Clawless otter
- ☐ Whale
- ☐ Dolphin



GPS COORDINATES
S 31.28266
E 29.95219



Mkhambathi was once a leper colony, before being proclaimed a nature reserve in 1977. Today it is co-managed by the ECPTA and the Mkhambathi Land Trust - a partnership resulting from a settlement agreement through the land restitution process. The local community benefits from the recreational use of the land and protection of its precious resources.



DIRECTIONS

From Flagstaff, travel the R61 for 70km to Mkhambathi Nature Reserve on the Holy Cross Hospital Road.

ACCOMMODATION

The fully equipped accommodation is rustic and offers visitors a real chance to experience the African wilderness. The Gwe Gwe River and lagoon nearby is ideal for fishing and swimming. Up river is Main Lodge, a beautiful large sandstone lodge, fully equipped, with a swimming pool to relax at after a day of exploring the bush and beach. All accommodation is self-catering.

- **MAIN LODGE:** Fully equipped, self catering, 5 en-suite bedrooms with bath & shower and swimming pool - sleeps 10
- **STONE COTTAGE (2):** Fully equipped, self catering, 3 bedrooms - sleeps 6.



ACTIVITIES

- Fishing (in designated areas with permits)
- Swimming
- Hiking
- Bird watching
- Whale & dolphin watching
- Canoeing
- Diving
- Game drives
- Nature walks
- Horseshoe Falls
- Strandloper Falls
- Mkhambathi Falls
- Shipwreck exploring- Sao Bento (1554) near the mouth of the Msikaba River | Grosvenor (1782) in Lambasi Bay.



NEAREST TOWNS

- FLAGSTAFF - 70 KM
- LUSIKISIKI - 90KM
- PORT EDWARD - 170km
- MTHATHA - 240km

RECOMMENDED VEHICLE
High clearance (2x4 or 4x4)





ACCOMMODATION

Double Mouth is an incredible secluded campsite, set among the trees overlooking a beautiful stretch of the Wild Coast. The campsite is laid out in a perfect semi-circle, protected on all sides by forest, with a communal ablution block, and individual braai facilities and electricity points for each of the 30 sites. A lush, grassy field offers a lovely place for kids to play and families to picnic, and just beyond that is the beach cove, where rock pools abound and waves roll up the pebbly beach.

DAY VISITOR FACILITIES

- Parking
- Picnic site
- Braai facilities



- **DOUBLE MOUTH CAMPSITE:** 30 sites - with electrical points and ablution facility with hot water.

DOUBLE MOUTH

Nature Reserve

Nestled alongside the popular holiday town of Morgan Bay, just 50 minutes' drive from East London, Double Mouth Nature Reserve is one of the Eastern Cape's premier coastal camping destinations. Thirty beautiful camp and caravan sites enjoy spectacular sea views and easy access to both the beach and the Quko River Mouth, making this the ideal camp for fishing, diving and water sport enthusiasts. The adjacent estuary and lush forested dunes are home to a large number of bird species, while small game such as bushbuck, blue duiker, mongoose and vervet monkeys are frequent campsite visitors.

Remnants from the shipwreck - Santo Espiritu that ran aground in 1608 just off Black Rock between Haga-Haga - 'money cowries' (cowrie shells used as money to buy goods), carnelian beads (red in colour and were mined in India over a century ago) and Chinese blue and white Ming porcelain shards can be found in the shingle and sand at what has become known as 'Bead Beach', between Black Rock and the Quko River at Double Mouth.



PERMITS REQUIRED

Fishing permit (from post office)

CONTACTS

reservations@ecpta.co.za
043 492 0883/4
<http://bookonline.ecpta.co.za/>



NEARBY ATTRACTIONS

- The Morgan Bay Cliffs
- Gxara Village visits
- Climbing and abseiling
- Morganville Motorcycle Museum
- Golf at Kei Mouth Country Club
- Cape Morgan Lighthouse
- Kei Mouth
- The Bushbuck Trail
- Bowls at the Morgan Bay Bowling Green
- Wild Coast Horseback Adventures
- Pont at Kei River
- Morgan Bay Hotel
- Miarestate
- Haga Haga

DIRECTIONS

Drive 35 km from East London on the N2 in the direction of Durban. Turn right down the R349 to Morgan Bay (40km). Double Mouth is just 5km south of Morgan Bay along Beach Road.



GPS COORDINATES
S -33 | E 27.8

ACTIVITIES

- Camping
- Caravanning
- Hiking
- Picnicking
- Bird watching
- Fishing
- Swimming
- Surfing
- Canoeing

BIRDS

- ☐ Cape Gannet
- ☐ White-breasted cormorant
- ☐ Cape cormorant
- ☐ Reed cormorant
- ☐ Grey heron
- ☐ Black-headed heron
- ☐ Little egret
- ☐ Cattle egret
- ☐ Hadedda ibis
- ☐ Cape vulture
- ☐ Kelp gull
- ☐ African wood owl
- ☐ Spotted eagle owl
- ☐ African grass owl
- ☐ Barn owl
- ☐ African fish eagle
- ☐ Jackal buzzard

PLANTS

- ☐ Wild banana (Ikhamanga)
- ☐ Milkwood (Umntunzi)
- ☐ Sweet thorn (Umnga)
- ☐ Fig tree (Umthombe)
- ☐ Wild date palm (Isundu)
- ☐ Coastal silver oak (Igqange)
- ☐ Cat thorn claw tree (Ispingo)
- ☐ African potato (Inongwe)
- ☐ Kakiebos (Ukutya kukaxam)

ANIMALS

- ☐ Bush Pig
- ☐ Bushbuck
- ☐ Blue duiker
- ☐ Mongoose
- ☐ Vervet monkey
- ☐ Clawless otter
- ☐ Dolphin
- ☐ Whale
- ☐ Porcupine



NEAREST TOWNS

- MORGAN BAY - 4km
- EAST LONDON - 90km

RECOMMENDED VEHICLE
High clearance (2x4 or 4x4)

DID YOU KNOW?

FEELING THE PULL OF THE EASTERN CAPE BUT WANTING SOME MORE INFORMATION ABOUT WHAT YOU CAN LOOK FORWARD TO? HERE ARE SOME INTERESTING FACTS ABOUT THE PROVINCE TO MAKE YOUR SUMMER SWEETER.



01

The Eastern Cape lays claim to the highest bridge in Africa at a whopping 216m high. Those brave enough even have the opportunity to bungee jump off of it!



02

Addo Elephant National Park is home to over 600 elephants and has been in development since 1931.



03

The Eastern Cape can boast not just the Big 5 but the Big 7 which includes elephant, lion, buffalo, leopard, rhino and the great white shark and southern right whale.



04

The Eastern Cape is home to the Baviaanskloof World Heritage Site which spans a distance of 200km.



05

The Eastern Cape is the birth and burial place of the late world leader and freedom fighter Nelson Mandela.



06

The Eastern Cape's glistening coastline stretches across 800km.



07

Did you know Naude's Neck Pass, with its summit at 2,587m above sea level, is the second highest dirt road in South Africa?



08

Did you know the capital of the Eastern Cape is Bhisho?



09

The Eastern Cape is the 2nd largest province in South Africa.



10

Nelson Mandela Bay is the Bottle Nose Dolphin capital of the World.

SAFE AND SOUND SUMMER

WHILE THE HOLIDAYS ARE ALL ABOUT HAVING FUN, IT'S EXTREMELY IMPORTANT TO BE AWARE OF YOUR SAFETY.

HELPFUL TIPS:

- At the airport obtain information from marked information counters or offices.
- Look out for stray animals on the road.
- Do not drink and drive.
- In an event of an accident, contact the police and emergency services.
- Keep an eye on your valuables and luggage at all times in public spaces.
- Store your passport and valuables in the hotel safe deposit box.
- Use registered tour guides. Contact tourism offices for tour guides.

WATER SAFETY TIPS

- Always swim or surf at a beach patrolled by surf lifesavers or lifeguards.
- Swim between the red and yellow flags.
- Avoid swimming alone or unsupervised.
- Float with a rip current. Do not swim against it.
- If you get into difficulty, try to stay calm, float and raise one arm until help arrives.
- Don't run and dive into the water, even if you checked for hazards earlier. Conditions can change.
- Don't swim directly after a meal.
- Don't swim under the influence of alcohol or drugs.
- If you are unsure of the conditions, ask a surf lifesaver or lifeguard.
- Read the signs. If a beach is closed don't swim there.
- Don't drink and swim or drive motor boats. Alcohol dulls the senses, slows the reactions and can cause irresponsible behaviour.
- Know how to do CPR or how to blow air into another person's lungs until help arrives.
- Don't dive from tidal pool walls, as this has been known to result in spinal injuries.
- Pools provide a safer option to swim in than the oceans, as the currents are kept at bay. Do not take out small or unstable boats far from shore in choppy water or stormy weather.

EMERGENCY CONTACTS

HOSPITALS

Port Elizabeth
Provincial Hospital
041 392 3911
Netcare Greenacres
Hospital PE
041 390 7000
Life St Georges
Hospital PE
041 392 6111
Frere Hospital East
London
043 709 1111
Life St Dominics
Hospital
East London
043 707 9000
Life Beacon Bay
East London
043 711 5100
Port Alfred Hospital
046 604 4000
Life Queenstown
Private Hospital
045 838 4110
Mthatha General
Hospital
047 502 4432/3
Stutterheim Provincial
Hospital
043 683 1313
EMERGENCY CONTACTS
ER24 EMS
084 124
Netcare 911
082 911
Municipal Ambulance
10177

FIRE BRIGADE

Port Elizabeth
041 585 1555
East London
043 705 9000
Mthatha
047 501 4182
Queenstown
045 839 2233
Port Alfred
046 624 1140

POLICE STATIONS

Port Elizabeth
041 394 6000
East London
043 707 0687/2
Port Alfred
046 624 1583
Queenstown
045 808 6030
Mthatha
047 501 1010/1000
Stutterheim
043 683 1996/2828
Grahamstown
046 603 9152/9111

SEA RESCUE

Port Elizabeth
082 990 0828
East London
082 990 5972
Port Alfred
082 990 5971
Jeffreys Bay
079 916 0390
Port St Johns
082 550 5430

Epic Eastern Cape BLUE FLAG BEACHES

THE EASTERN CAPE IS INCREDIBLY PROUD TO HAVE BEEN AWARDED TWO BLUE FLAG MARINA SITES IN ST FRANCIS BAY AND IN PORT ALFRED. ADDITIONALLY, THE PROVINCE HAS RETAINED SEVEN BLUE FLAG BEACHES.

BLUE FLAGS WILL BE FLOWN THIS SUMMER AT:

- **KARIEGA BEACH** (Kenton-on-Sea)
- **HOBIE BEACH** (Nelson Mandela Bay)
- **HUMEWOOD BEACH** (Nelson Mandela Bay)
- **KINGS BEACH** (Nelson Mandela Bay)
- **DOLPHIN BEACH** (Jeffreys Bay)
- **KELLY'S BEACH** (Port Alfred)
- **HAMBURG BEACH** (Between Port Alfred and East London)

This is a respected eco-label for beaches, boats and marinas that is internationally recognised as a sign of quality and is regarded by the World Tourism Organisation as the most well-known global eco-label. It is an authenticated depiction that these beaches have met a stringent criteria relating to environmental, safety and educational criteria.

Blue Flag Beaches are all about sustainable tourism, by not only promoting the beauty that the Eastern Cape Coastline has to offer but enjoying them responsibly.

JUST ONE MORE REASON TO ENJOY THE EASTERN CAPE OVER THE SUMMER SEASON!



WHAT ABOUT shopping?

EASTERN CAPE'S LOCAL MALLS CATER TO EVERYONE'S NEEDS:



MOFFETT-ON-MAIN
Port Elizabeth
041 367 1308



GREENACRES SHOPPING CENTRE
Port Elizabeth
041 394 2800



WALMER PARK SHOPPING CENTRE
Port Elizabeth
041 368 2690



BAYWEST MALL
Port Elizabeth
041 492 0331



HEMMINGWAYS MALL
East London
043 721 3180



VINCENT PARK SHOPPING CENTRE
East London
043 783 6700



BEACON BAY RETAIL PARK
East London
043 748 4660



METLIFE MALL
King William's Town
082 354 2690



CIRCUS TRIANGLE SHOPPING MALL
Mthatha
047 315 1304



ROSEHILL MALL
Port Alfred
046 624 1436



HERITAGE MALL
Grahamstown
046 624 2182



BT NGEBS CITY
Mthatha
078 124 2396



SUMMER *green & clean*

Let's ensure we keep this beautiful area clean and available to enjoy for many years to come. There are small changes that can be made in order to be more environmentally conscious this summer season.

The summer months are mostly spent outside and in order to keep the areas you frequent appealing, be aware of how much waste you are producing and where you are depositing it. Throwing your litter into appropriately marked bins is the simplest way to be more conscious with waste but there are many more steps you can take to producing less rubbish.

Avoid using single-use or plastic disposable items such as plastic straws and bags and plastic plates, cups and utensils. These items are building up unnecessary waste in the oceans and landfills, as they are not biodegradable. This means they will remain on this earth forever. Instead, use cloth napkins and buy durable items that can be reused. Simply reusing the same shopping bags, you can easily reduce the amount of waste they cause. You could also avoid buying items that are over packaged with plastic or foil wrapping. Additionally, opt for electronic communication instead of receiving it on paper. This will all contribute to reducing your waste.

Reusing items such as glass jars, newspapers, tyres and wastepaper will make a big difference to how much waste you produce. By using an item for a purpose that it was not originally made for, you would largely cut down your waste. Before throwing an item away, try to find another way to use it. Alternatively, some items can be rehomed or donated to those less fortunate. As the saying goes, "One man's trash may be another man's treasure."

Recycling your rubbish is another way of being more aware of the impact you have on the environment. Fortunately, recycling is becoming more and more common and is not difficult to do. Rubbish can be sorted into categories (such as glass, plastic and paper), collected and dropped at recycling plants or at businesses that have allocated bins. Your waste could then be turned into another product, instead of creating more waste and another being made. Furthermore, by buying products made from recycled material, you will be supporting recycling so more can be done. Recycling can make a big difference if everyone is contributing to it.

Living 'green' is all about everyone making simple changes to their everyday life, so that it can make a big impact on the very troubling environmental issues we are currently facing.

HERE ARE SOME MORE GREEN TIPS TO ENSURE YOU ARE LIVING IN AN ENVIRONMENTALLY FRIENDLY WAY:

- 1** When drinking water, use glass bottles and refill them when needed.
- 2** Save water by taking showers, as opposed to baths.
- 3** Turn off lights when not in use.
- 4** When possible, opt for a solar electricity option.
- 5** Buy non-toxic products wherever possible.
- 6** Think carefully about what you are buying: is it disposable, reusable, necessary?

TOURISM *Offices*

The Eastern Cape has a number of information tourist points to further guide and help you when visiting this wonderful part of the world.

USE THE FOLLOWING CONTACT DETAILS WHEN PLANNING YOUR TRIPS AND ADVENTURES.



AMATHOLE DISTRICT MUNICIPALITY
+27 (0)43 78 2214



BAVIAANS TOURISM
+27(0)44 923 1702 / +27(0)83 420 5434
www.baviaans.co.za
tourism@baviaans.co.za



BUFFALO CITY MUNICIPALITY
+27 (0)43 705 1167



ECTOUR (EMFULENI CORRIDOR TOURISM)
+27 (0)41 507 7912
ectour-ceo@suninternational.com



GAMTOOS TOURISM
+27 (0)83 556 3206
info@baviaans.net



GRAAFF -REINET
049 892 4248
info@graaffreinet.co.za



JEFFREYS BAY TOURISM
+27 (0)42 293 2923
info@jeffreysbaytourism.org



KENTON ON SEA
+27 (0)46 648 2411
tourism@kenton.co.za



KOUKAMMA TOURISM
+27 (0)42 288 0303 / 7250



LANGKLOOF / JOUBERTINA TOURISM
+27 (0)42 273 1516 / 1313



MAKANA TOURISM
+27 (0)46 622 3241
info@grahamstown.co.za



MIDDELBURG KAROO TOURISM
+27 (0)49 842 1627
tourismd@adsactive.com



NELSON MANDELA BAY TOURISM
+27 (0) 41 582 2575
info@nmbt.co.za



PORT ALFRED TOURISM
+27 (0)46 625 1235
tourism@sunshinecoasttourism.co.za



SARAH BAARTMAN DISTRICT MUNICIPALITY
+27 (0)41 508 7141



ST FRANCIS TOURISM
+27(0)42 294 0076
www.stfrancistourism.co.za
info@stfrancistourism.co.za



SUNDAYS RIVER VALLEY TOURISM FORUM
+27 (0)42 230 0066
info@greateraddoroute.com



TOUR GUIDE ASSOCIATION
+27 (0)41 379 1629
info@umzantsi.co.za



TOURISM SOMERSET EAST
+27 (0)42 243 1448
bcrm.tourism@ignet.org.za



TSITSIKAMMA TOURISM ASSOCIATION
+27 (0)42 285 0562

TOUR Operators

Support local tour operators! They know the area best and can provide you with the most accurate and useful information. There are a number of qualified tour operators just waiting to make your summer better by organising an epic Eastern Cape adventure for you and your family.

THE FOLLOWING COMPREHENSIVE LIST HAS BEEN COMPILED FOR YOU TO MAKE FINDING ADVENTURE SO MUCH EASIER:

CHANTELLE MARAIS
GO TRAVEL
grt@gotravel.co.za
071 670 4747
Provincial with a Karoo focus

DEWALD NIEMANN
OUDEBOSCH PROTEA FARM TOURS
oudeboschfarmstall@igen.co.za
042 285 0592
Tsitsikamma

LUVO NDIMA
JAMA TOURS
luvo@jamatours.co.za
073 140 0603
Provincial

LLOYD EDWARDS
RAGGY CHARTERS
info@raggycharters.co.za
073 152 2277
Marine Safaris Port Elizabeth

ESTI STEWART
BAVIAANS TO BAY: CHOKKA TRAIL & BAVIAANS CAMINO
info@chokkatrail.co.za
073 825 0835
Kouga Region

ALAN FORGARTY
ALAN TOURS
info@alantours.co.za
041 378 1486
Provincial and Other

SITHEMBISO FOSTER
EZETHU TOURS
info@ezethutours.co.za
083 493 8741
Provincial

SISEKO YELANI
UNCUTHU TOURS
s.yelani@yahoo.com
073 184 9617
Provincial

VELILE NDLUMBINI
IMONTI TOURS
velile@imontitours.co.za
083 487 8975
Provincial and Other

THABATHANI TSHAKA
TSHAKA TOURS
tshakathabathani@gmail.com
083 394 7746
Provincial

THOBELA ROLOMA
TRAVELOMATOURS
tobs@travelomatours.com
076 818 7324
Provincial

TSHEPO MOERANE
0.45.COM TOUR OPERATOR
045.com@gmail.com
072 872 9597
Provincial

LESTER BARENDSE
IKHAYALAM LODGE & TOURS
lesterbarendse@telkomsa.net
083 270 4968
Provincial

VIOLET LUPUWANA
CHUMILE HOLDINGS
violet@chumile.co.za
072 576 6525
Provincial

OTTO NTSHEBE
OTTO TOURS
ottours@webmail.co.za
082 214 4242
Provincial

THANDI MIEDEMA
CALABASH TOURS
bernice@calabash tours.co.za
084 552 4414
Port Elizabeth and Surrounds

SIPOKAZI MATUTU
VAKASHA TOURS
smatutu@gmail.com
084 734 2011
Provincial

SISA MANXIWA
ENKOSI TRAVEL & TOURS
scmanxiwa@webmail.co.za
072 227 0960
Provincial

NEIL LYON
LYON TOURS
neil@lyontours.co.za
083 383 2970
Provincial and Other

HELOISE SMIT
AWEHNESS TOURS
info@aweitness.org
076 483 3397
Port Elizabeth and Surrounds

LEIGH KATZEN
AFROVENTURES TOURS
leigh@afroventures.co.za
072 460 3621
Provincial

VERNON WAIT
PEMBURY
info@pemburytours.com
041 581 2581
Provincial and Other

JIMMY SELANI
JIMMY'S TOURS
jimmy.mbuyie@webmail.co.za
082 507 2256
Wild Coast

DAVID MCNAUGHTON
KAROO CONNECTIONS
karooconnections@intekom.co.za
049 892 3978
Karoo Region

SEAN PRICE
AFRICAN HEARTLAND JOURNEY
sean@ahj.co.za
043 734 3012
Provincial

PETER JOSEPH
SA GUIDED TOURS
peter@saguidedtours.com
041 373 3092
Provincial and Other

SARINA ENGELEBRECHT
KAROO FOOD TOURS
sarina.engelbrecht@gmail.com
072 460 3621
Karoo Region

LYN HALLER
UMZANTSI AFRIKA TOURS
tours@umzantsi.co.za
041 379 1629
Provincial

HELEN ROSS
WILD COAST HIKING TRAILS
meross@iafrica.com
043 743 6181
Wild Coast

LUKE BECKMANN
BECKMANN'S TOURS AND SAFARIS
info@beckmanns.co.za
072 238 5683
Provincial

TIM CHRISTY
ST FRANCIS SAFARIS
stfranciswhalewatching@lantic.co.za
082 569 3750
Kouga Region

NICK KINGSLEY
GET REAL ADVENTURES
info@get-real.co.za
082 970 0661
Provincial and Other

MARTHINUS VAN DER WESTHUIZEN
UNTOUCHED ADVENTURES
marthinus@untouchedadventures.com
084 016 5663
Tsitsikamma

LEE - MARQUEE JANSEN
STORMSRIVER ADVENTURES
marketing@stormsriver.com
042 281 1836
Tsitsikamma

TERRI PICKLES
CRISS CROSS ADVENTURES
info@crisscrossadventures.co.za
071 608 3378
Greater Addo

KOBUS KOK
GUARRIE SAFARI
info@tiaghee.co.za
042 283 0739
Baviaanskloof and Karoo

SEAN OR SARAH
MOSAIC TOURISM
info@mosaictourism.co.za
083 375 1655
Provincial and Other

RED CHERRY ADVENTURES
team@redcherry.co.za
041 581 5335
Provincial

RAINIER SCHIMPF
EXPERT TOURS
Ssidive100@gmail.com
072 142 0420
Provincial and Other

IGNA TREGONING
SHIELD TOURS
shield@shieldtours.co.za
084 508 5364
Provincial and Other

DEBBIE SMITH
ADDO SECRET SAFARIS
info@debbiestours.co.za
076 785 3026
Provincial

BUKS MARAIS
CAMDEBOO ADVENTURE TOURS
info@karoopark.co.za
049 892 3410
Karoo Region

ALAN HOBSON
A & A ADVENTURES
info@aaadventures.co.za
082 375 4720
Provincial

ROD VAN HEERDEN
GEARED 2 GO TOURS
addodungbeetle@eezi.net
083 974 5802
Provincial

DELENE ALI
ALIGROOTBOOM SERVICES
delene.ali@tsitsikammaservices.co.za
064 500 7042
Provincial

NEILL KEMP
EBIKE ADVENTURES
ebikeadventuressa@gmail.com
082 310 4480
Provincial

ANITA LENNOX
CAPE ST FRANCIS ADVENTURES
seals@iafrica.com
042 298 0054
Kouga Region

TRACEY KOCH
AZIFANI GUIDED TOURS
azifani@lantic.net
083 456 3292
Provincial and Other

TONY
TONY TOURISM TOURS
tonytourismtours@gmail.com
084 731 3873
Provincial

JEANETTE
IMVELAPHI SAFARIS
jeanette@imvelaphisafaris.com
083 941 6196
Provincial

TONY NEVELING
GECKO TOURS
tneveling@telkomsa.net
041 365 5462
Provincial

WESLEY BLUNDEN
BLUNDEN COACH TOURS
marlane@blunden.co.za
041 451 4803
Provincial and Other

LUNGELO
LUNGTION TOURS
malilunge@gmail.com
063 1662997
Port Elizabeth and Surrounds

MEGAN
HELI PILOT
megan@helipilot.co.za
041 581 0327
Port Elizabeth and Surrounds

VISITEASTERNCAPE.CO.ZA

 /Eastern Cape Tourism  /EC_Tourism  /easterncapetourism

ADVENTURE PROVINCE
Eastern Cape
PARKS & TOURISM AGENCY